



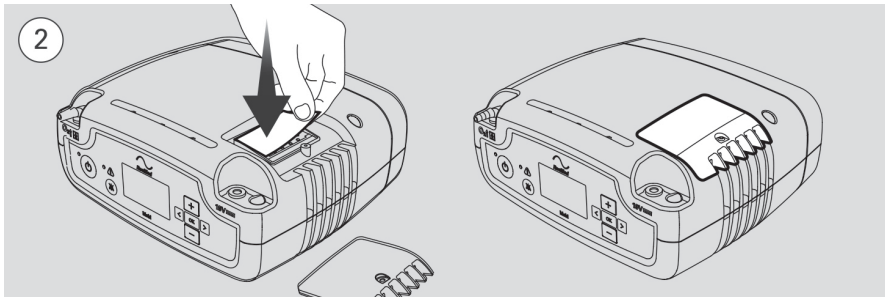
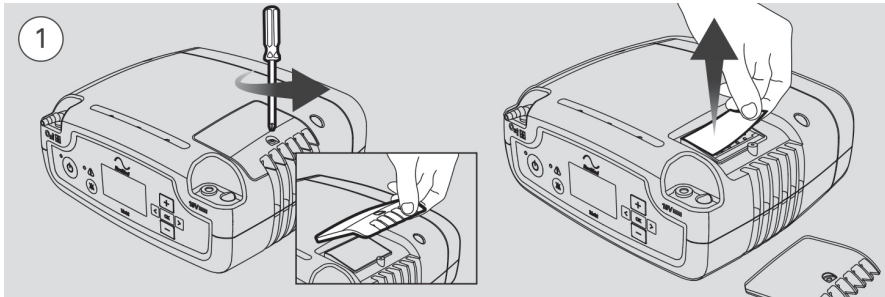
ResMed

Mobi™

Portable oxygen concentrator

Replacing the air filter

Check the air filter and replace it at least every 12 months. Replace it more often if there are any holes or blockages caused by dirt or dust.



1. Open the air filter cover and remove the old air filter.
2. Insert a new air filter and replace the air filter cover.

 **DirectHome
MEDICAL**

[CLICK TO LEARN MORE](#)

