



Cautions & Warnings

- Latex Free. If you have any reaction to any part of this mask or headgear discontinue use immediately.
- In the USA, federal law restricts this device to sale by, or on the order of, a physician.
- This system should be used only with CPAP or Bi-Level systems recommended by your physician or respiratory therapist.
- This mask should not be used unless the CPAP or Bi-Level is turned on and operating properly.
- The vent holes should never be blocked.
- Please refrain from smoking while using this product.
- Your mask must be cleaned and disinfected between patients using only the approved cleaning and disinfecting methods. Sterilization methods have not been validated for this product. Do not use bleach or solvents containing trichloroethylene.
- Your mask should be cleaned on an as-needed basis to prevent dirt and oil contamination from your skin building up on the mask.
- The patient should clean their face prior to wearing the mask.
- Ensure the mask is put on correctly. The printing information and adjustment tab should be on the bottom of the mask.
- The patient should not alter the design of the mask.
- Do not place the mask in a clothes dryer.

Limited Warranty

- www.circadiance.com/help



Presented With Compliments From
www.DirectHomeMedical.com



EMERGO EUROPE
Molenstraat 15
2513 BH, The Hague
The Netherlands
Tel: +31 (0)70 345 8570



Assembled in the
Dominican Republic
With US Made Parts



1060 Corporate Lane
Export, PA 15632 USA
Phone: 888-825-9640 or +1-724-858-2837
cservice@circadiance.com
www.Circadiance.com

100673 REV 1

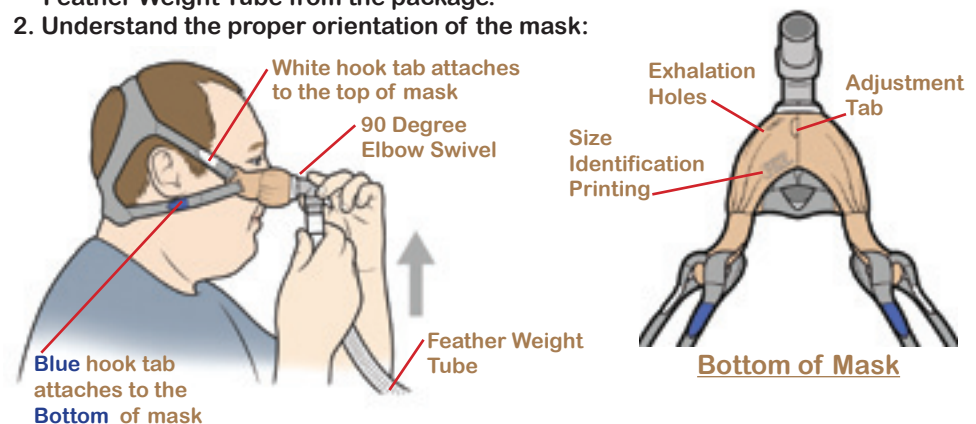


Intended Use

The SleepWeaver élan™ Nasal CPAP Mask is intended to provide an interface for Continuous Positive Airway Pressure (CPAP) or Bi-Level therapy. The SleepWeaver élan Nasal CPAP Mask is intended for single-patient reuse in the home and multi-patient, multi-use in the hospital/institutional environment. This mask is to be used on patients greater than 66 lbs (30 kg).

Mask Orientation

1. Remove your SleepWeaver élan Nasal CPAP Mask and Headgear and your Feather Weight Tube from the package.
2. Understand the proper orientation of the mask:



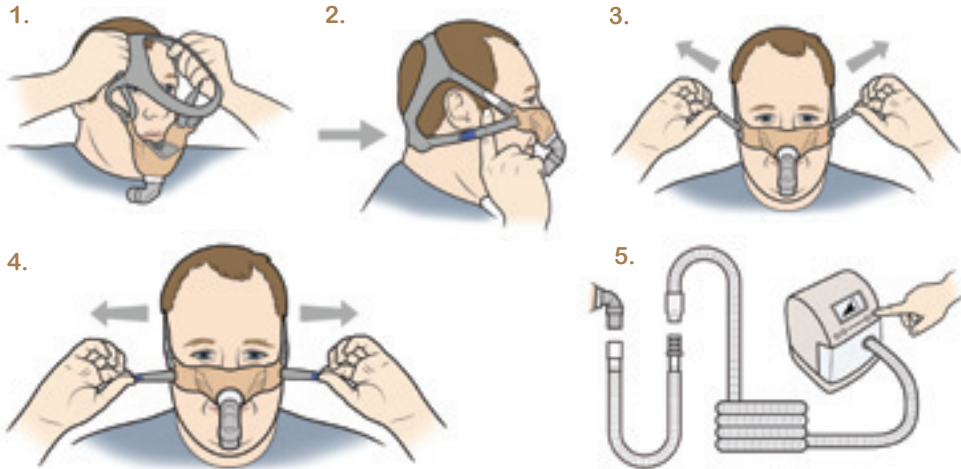
3. There are two sizes available (Regular and Large) and the size can be determined by viewing the pad printing on the bottom of the mask.
 - a. If the Regular size cushion is too small, change to the Large cushion.

Fitting the Mask Directly from Starter Kit

1. Put the mask on by pulling the headgear over your head.
2. The neck support of the headgear should sit comfortably on the lower part of your neck.

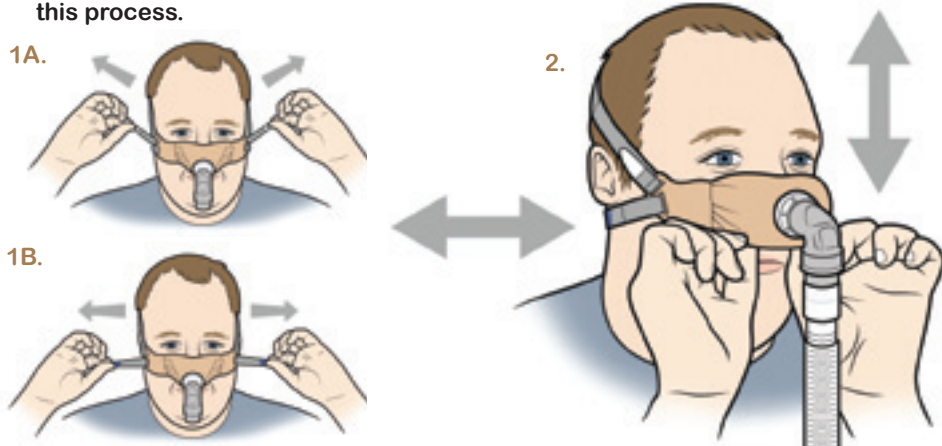
IMPORTANT – DO NOT OVERTIGHTEN THE STRAPS. START WITH THE STRAPS LOOSE AND THEN TIGHTEN AS NECESSARY TO ACHIEVE AN AIR-TIGHT SEAL.

3. Adjust the top (white hook tab) straps first so that the bottom of the mask is comfortably resting on your upper lip just below your nostrils.
4. Adjust the bottom (blue hook tab) straps to pull the mask comfortably against your nose. A small amount of the black fabric will show when the mask is in use.
5. Attach the Feather Weight Tube to the 90 degree elbow swivel then to the 6 foot tube that attaches to your CPAP or Bi-Level machine and turn on machine.



Adjusting for Leaks - If you experience leaks, try these steps:

1. Gently tighten the straps in very small increments to achieve a seal.
2. Wiggle the mask into place by shifting the mask left and right and up and down. The adjustment tab on the bottom of the mask can be used to assist during this process.

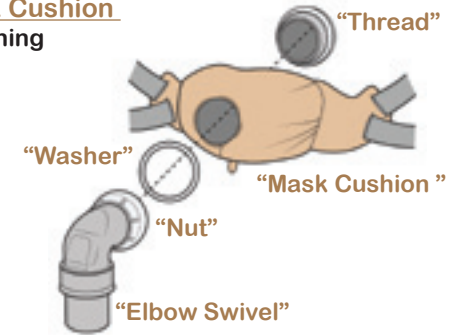


Attach Mask to Headgear

1. Slide the "White" hook tabs through the top slits of the cushion.
2. Slide the "Blue" hook tabs through the bottom slits of the cushion.

Attach 90 Degree Elbow Swivel to Mask Cushion

1. Slide the "Thread" piece through the opening from inside the mask.
2. Place the "Washer" piece over the "Thread" piece.
3. Ensure that the fabric does not ride up onto the thread piece.
4. Screw the "Nut" piece onto the "Thread" piece.



Attach Tether Strap to Headgear

1. Attach the "Tether Strap" to the Feather Weight Tube and to the top of the headgear to assist with tube management if the tube is directed over your head.
2. Ensure that the "Tether Strap" is not twisted when attached.



Cleaning the Mask in the home

- Your SleepWeaver élan™ should be cleaned by hand washing with a mild nonabrasive soap in warm water after each use. Never use hot water. Repeat washing until visibly clean.
- Rinse well with drinking quality water and allow to air dry out of direct sunlight.
- You may keep the 90 degree elbow swivel attached during cleaning or you may remove it and clean it separately.
- Hand wash the headgear weekly.

Cleaning & Disinfecting Between Patients

- Please visit www.circadiance.com/help for instructions.

Exhalation Valve

There is no jet of air with exhalation. Venting is through a series of small pinholes. The flow through the exhalation valve plus leaks from the swivel and other sources:

Pressure (cm H ₂ O)	4	5	10	15	20
Flow (LPM)- Regular	15.4	18.6	32.4	44.8	57.2
Flow (LPM)- Large	16.1	19.2	33.8	46.2	59.6

The SleepWeaver élan™ has been tested at pressures from 4 cm H₂O up to 20 cm H₂O on CPAP and Bi-Level systems.