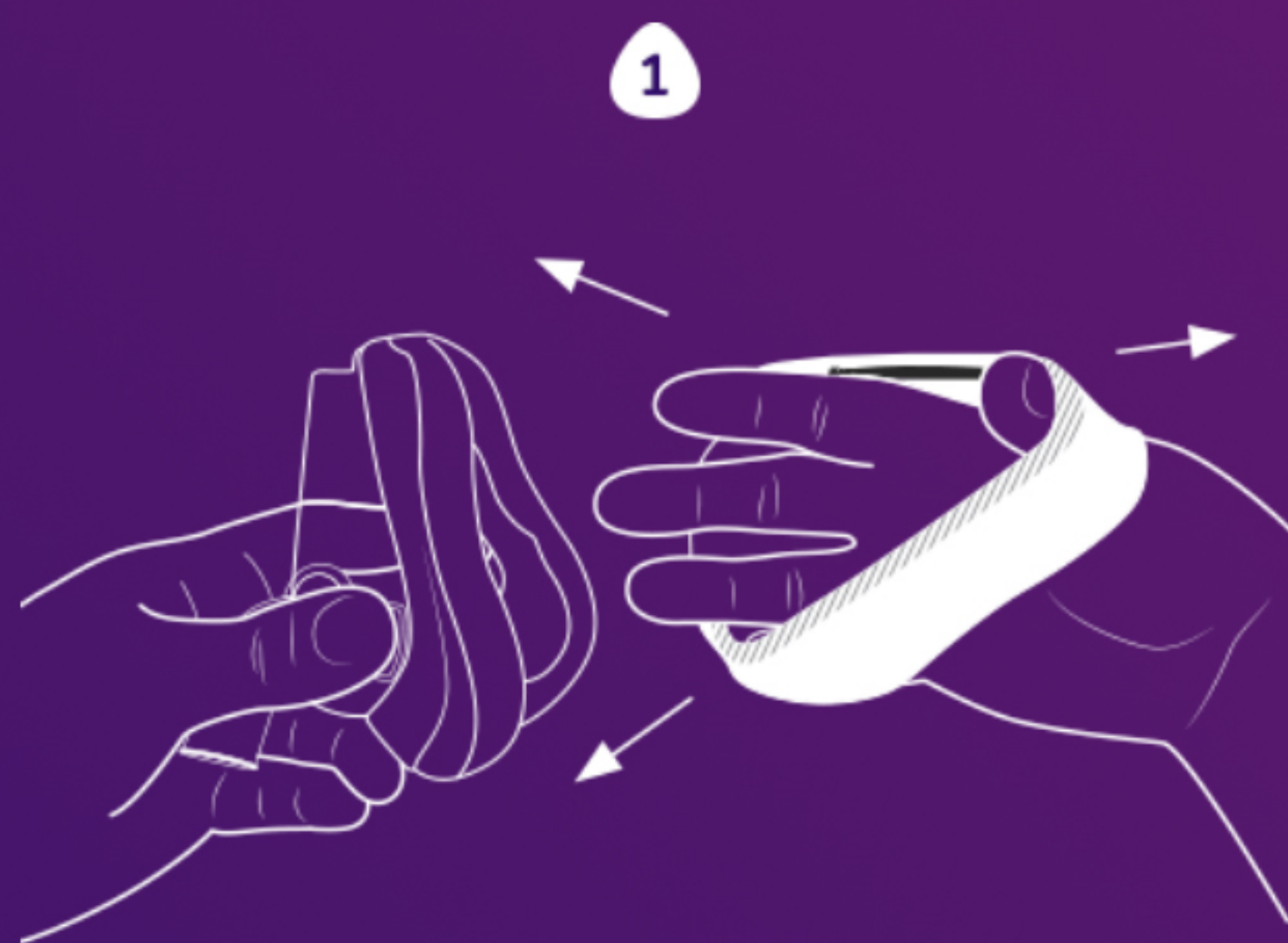
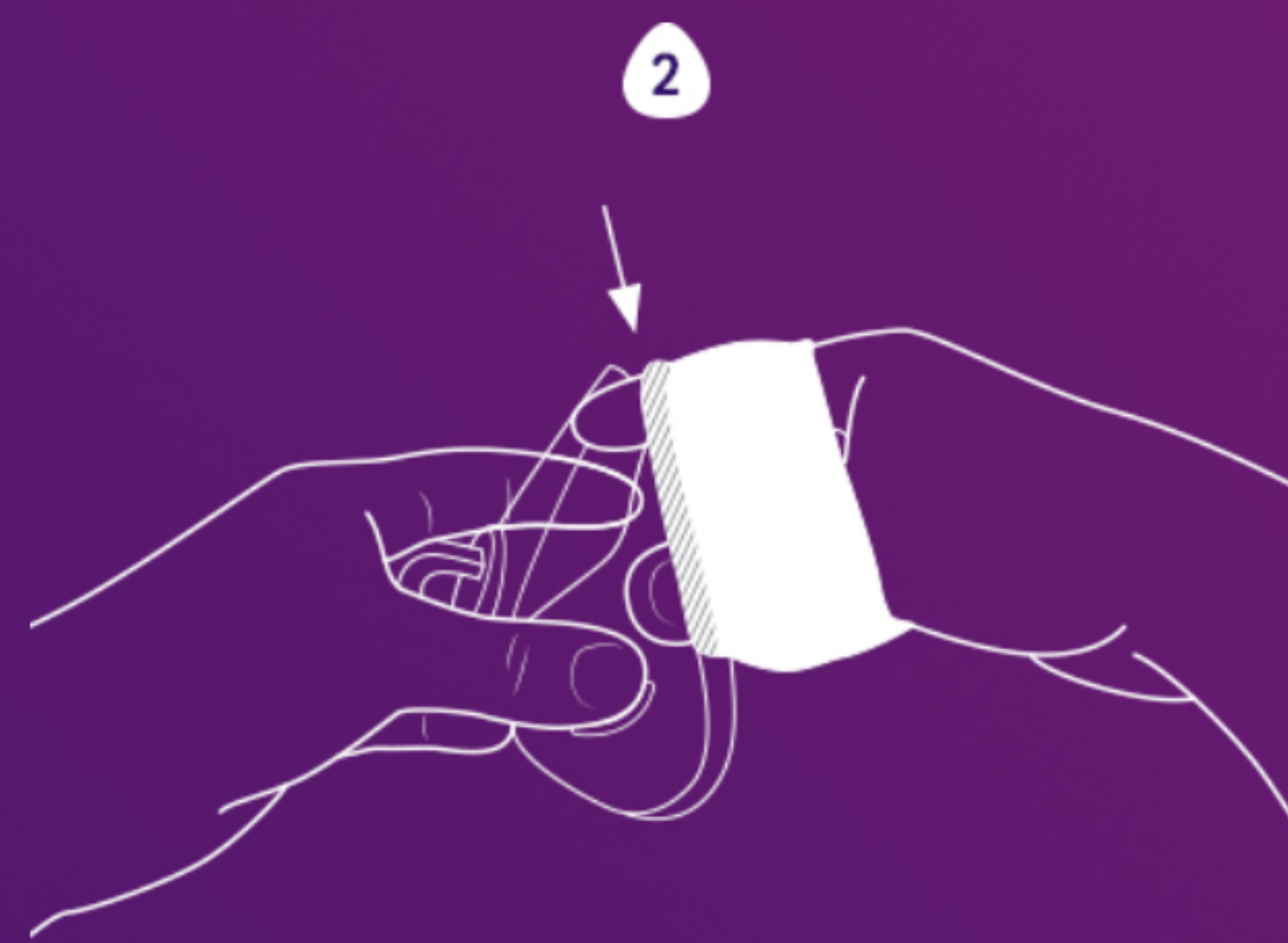


Full-Face CPAP Mask Liner Instructions & Tips from Snugz

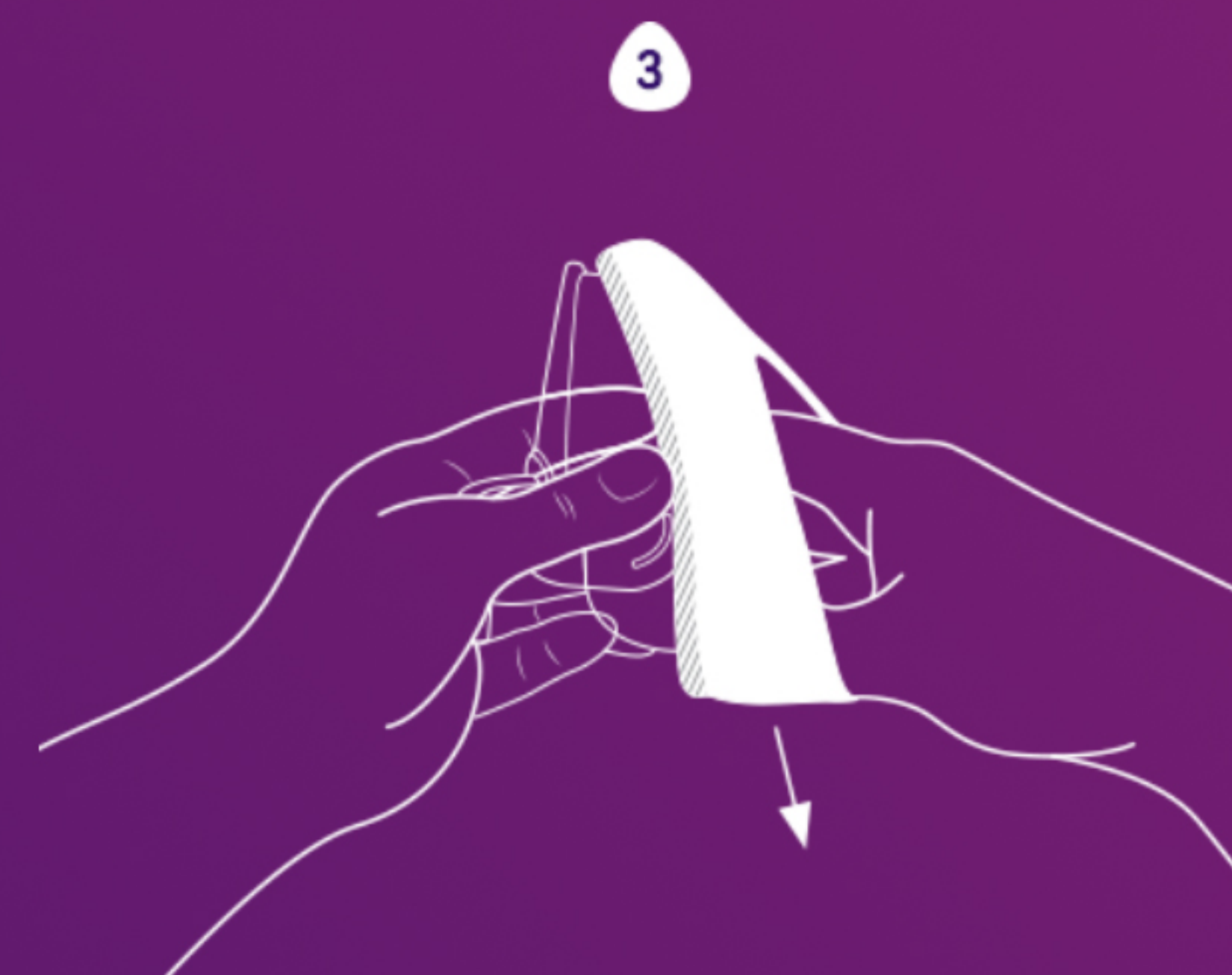
Using Snugz couldn't be any easier. Here's how:



1
First, slide your hand through the mask liner with the black line facing inward, touching your fingertips. Use fingers to spread the liner open.



2
Next, hook the upper outer edge of the mask liner over the top of your mask. The black line should be facing the mask. Easy enough.



3
Then stretch the mask liner to secure over the other rounded corners of the mask. Almost there!



4
Finally, achieve your desired mask coverage and comfort through minor tugging adjustments. For best results, ensure that Snugz are pulled inside the mask enough to cover all of the rubber mask cushion. That's it. Really. Now go to sleep.