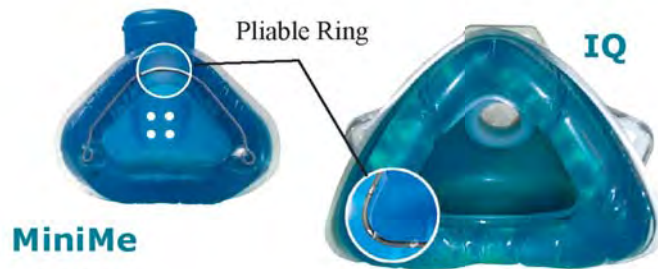
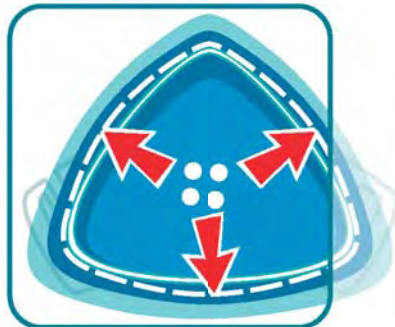


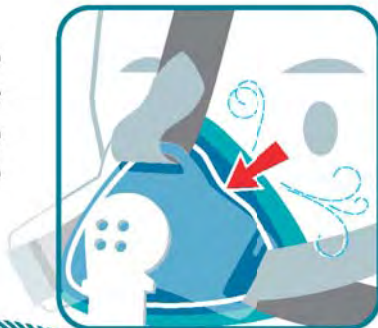
## TROUBLE SHOOTING



*Bend mask shell outward to resume original shape*



*Use gentle adjustments to customize mask shape*



If patient has redness on the bridge of their nose or face:

- Make sure headgear is not too tight
- Check that the mask is not pinching bridge of nose; adjust pliable ring or nose clip to reduce pressure
- Pull the mask away from face and reset on nose

If patient is experiencing leaks:

- Follow **Fitting Tips** for mask
- Readjust headgear
- Suggest patient try another SleepNet headgear ([www.sleep-net.com/size\\_chart.pdf](http://www.sleep-net.com/size_chart.pdf))

## MASK CARE

- DO** clean mask and tubing daily with mild soap and water; allow to air dry.
- DO** store in a cool, dry place away from excessive heat and excessive cold.
- DO** bend the pliable ring or nose clip to reduce leaks and pressure.
- DO NOT** use excessive and repeated force to bend the pliable ring or nose clip. The wire may lose flexibility and prevent the mask from forming a seal.
- DO NOT** clean the mask in a washing machine or dish washer.
- DO NOT** puncture or tear the gel cushion. The gel is non-toxic, but can leak out. Damage to the gel cushion will prevent the mask from forming a seal and will create air leaks. If the gel cushion is damaged, the mask must be replaced.
- DO NOT** try to repair gel cushion with tape or adhesive.
- DO NOT** block swivel vent holes; this will cause patient to rebreathe exhaled air.



Presented With Compliments From  
[www.DirectHomeMedical.com](http://www.DirectHomeMedical.com)



SleepNet Corporation · 5 Merrill Industrial Drive, Hampton, NH USA 03842  
1-603-758-6600 · Toll Free (800) 742-3646 USA and Canada  
Fax 1-603-758-6699 · [www.sleep-net.com](http://www.sleep-net.com)