



# The intelligent solution

**System One Sleep Therapy System** uses advanced intelligence to deliver excellent care while making patient management easy

**PHILIPS**  
**RESPIRONICS**  
sense and simplicity

# Proven efficacy

The System One REMstar Auto algorithm provides the latest technology in sleep apnea treatment. In head to head comparative studies, the REMstar Auto better suppresses obstructive events at significantly lower pressure levels<sup>1</sup> and has the most hours of patient use per night.<sup>2</sup> Furthermore, when compared to conventional CPAP, patients have preferred treatment with the REMstar Auto.<sup>3</sup>



## Advanced event detection

In addition to monitoring apnea, hypopnea, flow limitation, snore and leak, our advanced event detection recognizes and reports RERA, Periodic Breathing such as Cheyne-Stokes respiration, and also distinguishes obstructed airway apnea from clear airway apnea, informing you when a more advanced therapy device may be required.

## Advanced event response

Thanks to our advanced event detection, our algorithm does not react to clear airway apnea; reacting only on obstructive events and therefore providing excellent treatment efficacy.

## New Opti Start feature on the REMstar Auto

The initial setting is recalculated every 30 hours depending on the 90% pressure during the night. It will reduce the likelihood for events at the beginning of the night.

### References

- 1 Hertegonne, K. et al. Respiration 2007
- 2 Nolan, G.M. et al. Eur. Respir. J. 2006
3. Nussbaumer, Y. et al. Chest.

# Smart comfort



## Flex technologies

C-Flex, Bi-Flex, A-Flex and C-Flex+ are our clinically proven technologies that improve patient comfort while maintaining treatment efficacy. Thanks to our advanced Digital Auto-TRAK algorithm that detects the onset of inspiration and exhalation, our Flex technologies deliver just the right pressure relief at the right time, for every breath, making it easier for patients to adapt to therapy. C-Flex+ is our newest enhancement to comfort relief for our advanced CPAP units. The on-board Flex demo mode allows patients to feel the difference, simply by pressing a button.

## New mask fit and seal monitoring

System One can check mask fit and seal and let patients and clinicians know the status in real time, even when the device is off.

## 15 mm tubing

System One also features a 15 mm tubing option, offering excellent comfort, as it is flexible, light, easy to pack and quiet when in operation.

## System One humidity control

By analysing ambient temperature, relative humidity and patient flow, the System One humidity control delivers optimum humidity and ultimate comfort to the patient, while reducing rainout, even in changing environmental conditions. The new optional heated hose provides even more absolute humidity for patients sleeping in a cold environment.

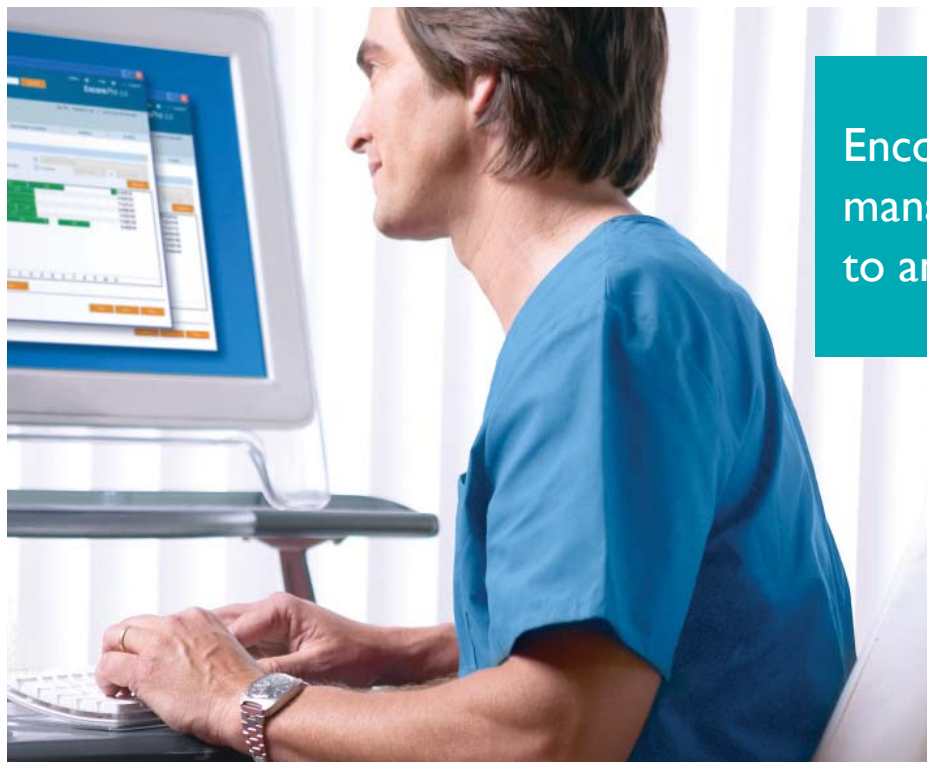
## New innovative solution for a quiet night

Philips Respironics System One is among the most quiet sleep therapy systems available, above all when it matters most: while the device is being used by patients.

The new noise reduction enhancements offer a healthy, good quality, night sleep and contribute greatly to a superb patient treatment compliance. Physicians and providers may also benefit from fewer callbacks.

Proven efficacy, smart comfort, and improved follow-up for optimized

# Improved follow-up



EncorePro 2 takes patient management performance to an even higher level



## Simple and intuitive

Users will find it easy to understand and, thanks to a tabbed navigation system, finding data becomes more intuitive.

## Efficient

The device remembers individual patient requirements and prioritizes actions according to levels of urgency. Summaries, notifications, and interaction tracking for critical patient information ensures excellent patient management.

## Secure

It helps to comply with increasingly strict patient data security needs by providing a secure way of storing information.

## SD card

The storage capacity of a 4GB memory SD card permits to save all patient's detailed therapy data. Thus, patient airflow waveforms may provide crucial information and simplify the patient's therapy follow-up.

## Memory on board

For additional data safety, a back-up memory has been made available on the device, avoiding any accidental loss of vital information. Furthermore, recording of data can now be obtained when performing manual titration with PC Direct.



# An enhanced platform



## Ease-of-use

- 1 Friendly navigation**  
with *turn and push* button
- 2 Easy night time viewing**  
Touching the wheel or the ramp button, illuminates the screen and automatically turns off after 30 seconds. This new back-lit screen allows patients to see System One's interface no matter how dark is their bedroom.
- 3 International use**  
The screen information is available in a number of international languages. A universal icon option is also available.



## Reliability

Through a combination of the intelligently designed water chamber, the risk of water ingress into the device is virtually eliminated. A filled water chamber may be tilted and even turned upside down without leaking back into the device.

## System One: a quality choice

In addition to the enhanced features and appearance of System One, we've built even more quality and durability:

- Among the quietest sleep therapy system available
- Water ingress protection thanks to the water chamber design and the Dry Box technology
- Durable, easy to connect, top-mount tubing connections
- Commitment to quality excellence has earned Philips Respironics the prestigious 2011 Manufacturing Plant of the Year by *Assembly Magazine*

**Philips Healthcare is part of  
Royal Philips Electronics**

**How to reach us**

[www.philips.com/healthcare](http://www.philips.com/healthcare)  
[healthcare@philips.com](mailto:healthcare@philips.com)

**Asia**

+49 7031 463 2254

**Europe, Middle East, Africa**

+49 7031 463 2254

**Latin America**

+55 11 2125 0744

**North America**

+1 425 487 7000

800 285 5585 (toll free, US only)

Philips Respironics  
1010 Murry Ridge Lane  
Murrysville, PA 15668

Customer Service  
+1 724 387 4000  
800 345 6443 (toll free, US only)

Philips Respironics International  
Headquarters  
+33 1 47 28 30 82

Philips Respironics Asia Pacific  
+65 6882 5282

Philips Home Healthcare Solutions  
Australia  
+61 2 9947 0440

Philips Respironics China  
+86 400 828 6665  
+86 800 828 6665

Philips Respironics Deutschland  
+49 815 293 060

Philips Respironics France  
+33 2 51 89 36 00

Philips Respironics Italy  
+39 039 2031

Philips Respironics Sweden  
+46 8 120 45 900

Philips Respironics Switzerland  
+41 6 27 45 17 50

Philips Respironics United Kingdom  
+44 800 1300 845

[www.philips.com/respironics](http://www.philips.com/respironics)

Please visit [www.philips.com/respironics](http://www.philips.com/respironics) to find out more



© 2012 Koninklijke Philips Electronics N.V. All rights are reserved.  
Philips Healthcare reserves the right to make changes in specifications and/or to discontinue any product at any time without notice or obligation and will not be liable for any consequences resulting from the use of this publication.

Respironics, A-Flex, Auto-TRAK, Bi-Flex, Dry Box, Encore, Flex Family, REMstar and System One are trademarks of Respironics, Inc. and its affiliates. The C-Flex mark is used under license.

May 2012 , PN 1101401, MCI 4104937, High Street Studios