



Advance notice

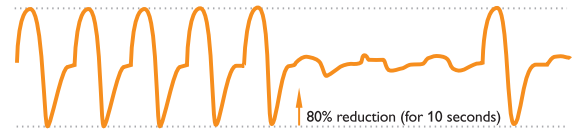
Advanced event detection keeps caregivers informed about patient therapy condition.



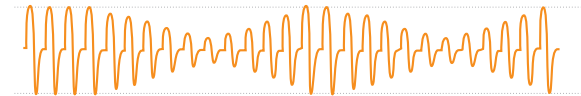
Detecting patient events and notifying the care team of required therapy adjustments assures optimal patient care.

Our new advanced detection algorithm builds on the clinically-proven Respironics event detection technology to create even greater device intelligence. In addition to monitoring the ongoing effectiveness of CPAP therapy, our new advanced event detection distinguishes obstructed airway (OA) apneas from clear airway (CA) apneas and informs you when a more advanced therapy device may be called for. The algorithm also automatically recognizes and reports when periodic breathing conditions such as Cheyne-Stokes respiration exist, allowing the care team to identify potential related comorbidities in a timely manner.

With our new ability to display patient flow, medical professionals can better assess patient conditions and needs. It's an intelligent system that gives you the advance notice you need to better manage your patients and your business.



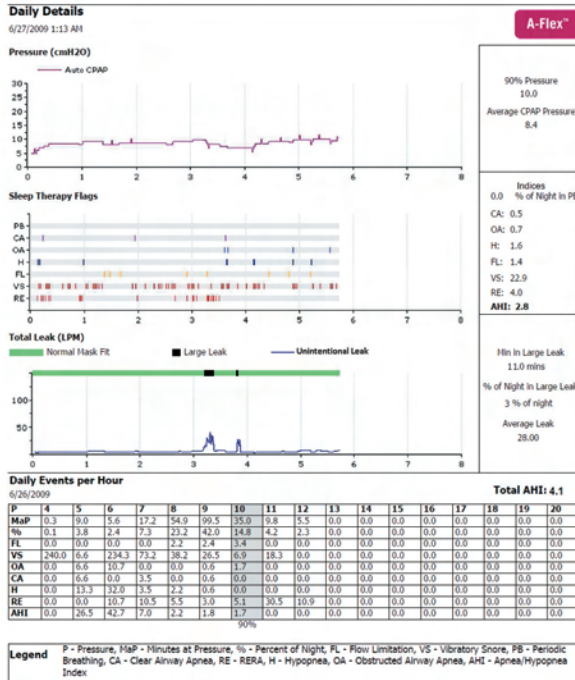
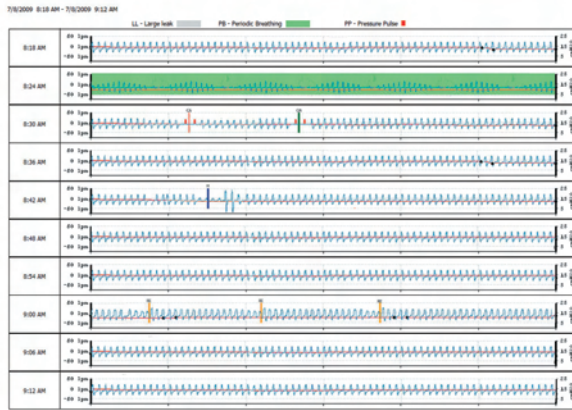
Most devices can only determine if an apnea has occurred. Our new advanced detection is the only technology that can determine if the patient's airway was open or closed during the apnea. After several seconds of significant flow reduction, the device delivers test pressure pulses and determines the airway to be clear if this pulse generates a significant amount of flow. This is reported as a clear airway apnea.



Periodic breathing, such as Cheyne-Stokes respiration, is recognized by a persistent waxing and waning breathing pattern. Periodic breathing is commonly associated with cardiac issues and may suggest a more serious patient condition. Advanced event detection provides the care team with information that can be used to identify potential patient complications.

PHILIPS

RESPIRONICS



Our new **Patient Flow & Event** report enables you to view on a weekly basis every breath your patient takes. The Patient Flow & Event report provides critical details that help you accurately identify and assess patient sleep conditions. As illustrated, patient data is highlighted with specific colors and labels for easy identification. This data includes patient pressure, large leak, and events such as periodic breathing, obstructed airway apnea, clear airway apnea, hypopnea, and more. The Patient Flow & Event report will display one night of patient flow data for every seven days of therapy sessions and is accessed through our Encore systems via SD cards or modems.*

Our **Encore data management systems** have been enhanced to include all new events on the Daily Detail and Long Term Trends reports as well as our new Patient Flow & Event report – all available via an SD card or modem.* With our improved reporting capabilities, the entire care team can more effectively manage their sleep therapy patients' needs.

Together, the Philips Respironics Sleep Therapy and Encore patient management systems can detect, respond and report on important events that impact the comfort and efficacy of a patient's sleep therapy.

* Not available in all countries.

Advanced event capabilities for REMstar and BiPAP Pro and Auto devices						
Events	REMstar Pro and BiPAP Pro			REMstar Auto and BiPAP Auto		
	Detect	Respond	Report	Detect	Respond	Report
Periodic breathing	✓	N/A	✓	✓	N/A	✓
Clear airway apnea	✓	N/A	✓	✓	N/A	✓
Obstructed airway apnea	✓	N/A	✓	✓	✓	✓
Hypopnea	✓	N/A	✓	✓	✓	✓
RERA	✓	N/A	✓	✓	✓	✓
Flow limitation	✓	N/A	✓	✓	✓	✓
Vibratory snore	✓	N/A	✓	✓	✓	✓
Large leak	✓	N/A	✓	✓	✓	✓

Respironics, BiPAP, Encore, and REMstar are trademarks of Respironics, Inc. and its affiliates.



© 2009 Koninklijke Philips Electronics N.V. All rights are reserved.

Philips Healthcare reserves the right to make changes in specifications and/or to discontinue any product at any time without notice or obligation and will not be liable for any consequences resulting from the use of this publication.

CAUTION: US federal law restricts these devices to sale by or on the order of a physician.

Hoehc KW 07/02/09 MCI 4102505 PN 1064809

Philips Healthcare is part of Royal Philips Electronics

Respironics Asia Pacific
+65 6298 1088
Respironics Australia
+61 (2) 9666 4444
Respironics Europe, Middle East, Africa
+33 1 47 52 30 00
Respironics United Kingdom
+44 800 1300 845

Philips Respironics
1010 Murry Ridge Lane
Murrysville, PA 15668
Customer Service
+1 724 387 4000
800 345 6443 (toll free, US only)
www.philips.com/respironics