



Testimonials

Great Product !

"After reading some of the reviews, I was skeptical that this would be any good. When I took it out of the box, it seemed a little flimsy but was well engineered. Now that I've use it for a week, I wonder why it took so long to decide to buy it. It's a GREAT product that works super. I no longer have a stiff neck from wrestling with the tubing. I LOVE IT!" –LARRY P, TX

A Real Godsend

"The Hose Lift System was a real godsend. It manages the hose as if it were a real person standing by the bed all night making sure that the hose doesn't interfere with my sleep whenever I turn in bed. I was so delighted with the performance and price of the System, that I ordered another one to have as a spare. I most highly recommend this system to all side sleepers who turn frequently and you can't beat the price." –Leonard R, Arlington, VA

Don't Hesitate

"I tried 2 hose management systems before this one, and this CPAP Hose Lift is the best -- the easiest to travel with but also the most functional. They key is the flexibility of the pole; the fact that the pole can turn as needed (i.e., if tugged lightly on); and the elastic band at the top, which allows the tube to come down if needed. Really wish I started with this one." –Michael S, NC

Testimonial proven to increase compliant use' by reducing loss of face to mask seal, hose hassle; and, "rain-out" collection with humidifier air.



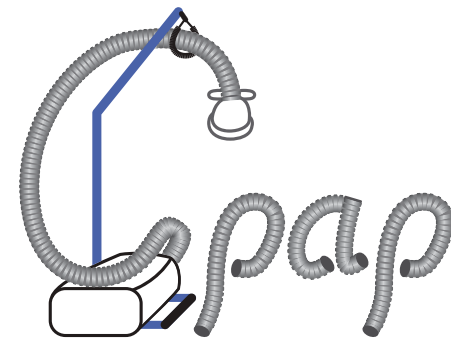
Ranked #1
in Consumer Hose Management Survey



designed of more expensive aluminum

Manufacturer:

Arden Innovations
See: ardeninnovations.com



Hose lift

VERSION 5.5

Arden Innovations.com



Suspends your CPAP Tubing Overhead,
Rotates with sleep movement, and thus,
Eliminates the Hose Hassle inherent with
All CPAP systems.

The Essential
"4th element"

fits within any CPAP machine travel case



'Folding, yet all parts strung gathered in order, it weighs only 5.5 oz (156g) and is a very small 2.1" diameter x 7" long.

Dual Use: Home & Travel

The new improved **CPAP Hose Lift v5.5** is simply the lightest, most compact home and travel, Dual Use hose management device available.

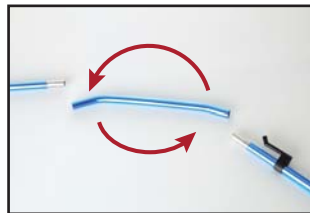
Compared to Previous v5

12% Lighter

16% More Compact

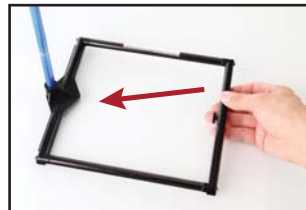
14% Larger Base

New: Optional Height / Reach



NEW
with v5.5

Optional height and reach – just flip the bend, and then the v5.5 will reach out a bit farther and stand a bit shorter. Start by 'unknotting' bungee at arrow:



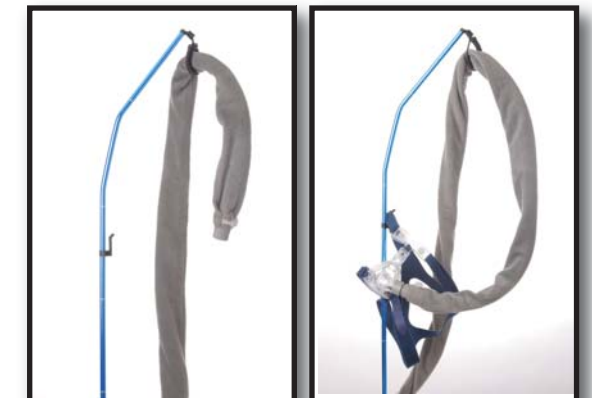
CE mark: CA011750; HTS#: 9019.20.00;
NPI#: 1467684712; Insurance Code#: 1399; Model: CPAPHLv5.5



The first and (only) true *Original*, with a Curly Cord "roller" on the suspending loop, eases movement of the cpap hose within.



A deep socket mast connection, a mast to base **stretched** cord, "tighten-n-lock:" mast to base - provides an even more stable platform, in hose suspension support.



Includes a Hook for your mask to store, out of your way.